



R.A. Royal CBD, LLC

Sample 597-110223-077

JoyPets - Burgers (CBD)

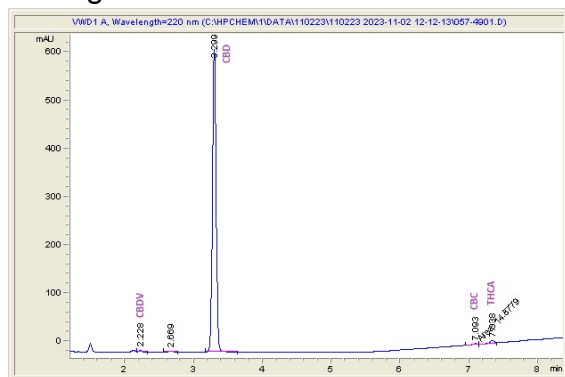
Sample Submitted: 11-02-2023; Report Date: 11-02-2023

Sample Unit Size: 164.00 g

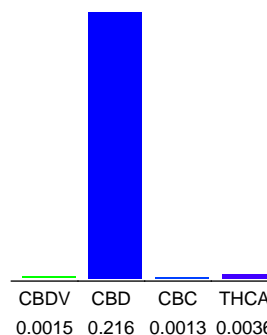
JoyPets - Burgers (CBD)

Edible: Other

Chromatogram



Cannabinoid Profile



Cannabinoid Profile by HPLC

0.00%

Delta-9-THC

0.22%

CBD

0.22%

Total Cannabinoids

Cannabinoid	% wt	mg/unit
CBDV	0.0015	2.46
CBD	0.216	354.24
CBC	0.0013	2.132
THCA	0.0036	5.904
Total Cannabinoids	0.22	364.7
Calculated Total THC	0.00	5.18
Calculated CBD Yield	0.22	354.24

Calculated Total THC = Delta-9-THC + 0.877 * THCA

Calculated Maximum CBD Yield = CBD + 0.877 * CBDA

Marin Analytics, LLC

250 Bel Marin Keys Blvd, Suite D4
Novato, CA 94949

833-321-TEST / info@marinanalytics.com

Mike Clemmons
Lab Manager

This sample has been tested by Marin Analytics, LLC using valid testing methodologies and a quality system. Values reported relate only to the sample tested. Marin Analytics, LLC makes no claims as to the efficacy, safety, or other risks associated with any detected or non-detected levels of any compounds reported herein. This Certificate shall not be reproduced except in full without the written approval of Marin Analytics, LLC. Copyright 2023 Marin Analytics, LLC All Rights Reserved.