



R.A. Royal CBD, LLC

Sample 597-083023-068

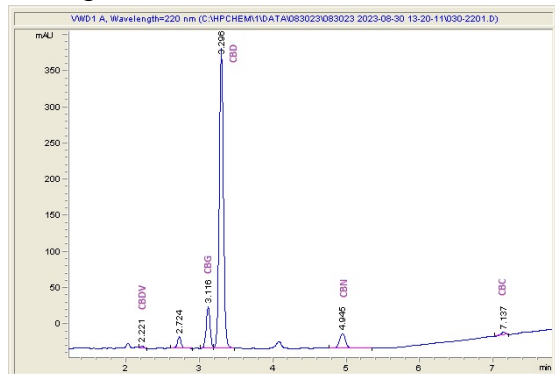
CBD+ 3 in 1 - Cherry Pie

Sample Submitted: 08-30-2023; Report Date: 08-31-2023

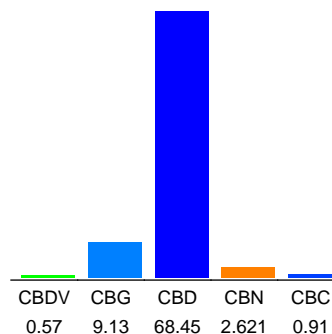
CBD+ 3 in 1 - Cherry Pie

Distillate

Chromatogram



Cannabinoid Profile



Cannabinoid Profile by HPLC

0.00%

Delta-9-THC

68.45%

CBD

81.68%

Total Cannabinoids

Cannabinoid	% wt	mg/g
CBDV	0.57	5.7
CBG	9.13	91.3
CBD	68.45	684.5
CBN	2.621	26.21
CBC	0.91	9.1
Total Cannabinoids	81.68	816.8
Calculated Total THC	0.00	0.00
Calculated CBD Yield	68.45	684.50

Calculated Total THC = Delta-9-THC + 0.877 * THCA

Calculated Maximum CBD Yield = CBD + 0.877 * CBDA

Marin Analytics, LLC

250 Bel Marin Keys Blvd, Suite D4
Novato, CA 94949

833-321-TEST / info@marinanalytics.com

Sara Biancalana
Chief Scientist

This sample has been tested by Marin Analytics, LLC using valid testing methodologies and a quality system. Values reported relate only to the sample tested. Marin Analytics, LLC makes no claims as to the efficacy, safety, or other risks associated with any detected or non-detected levels of any compounds reported herein. This Certificate shall not be reproduced except in full without the written approval of Marin Analytics, LLC. Copyright 2023 Marin Analytics, LLC All Rights Reserved.