



R.A. Royal CBD, LLC

Sample 597-041323-045

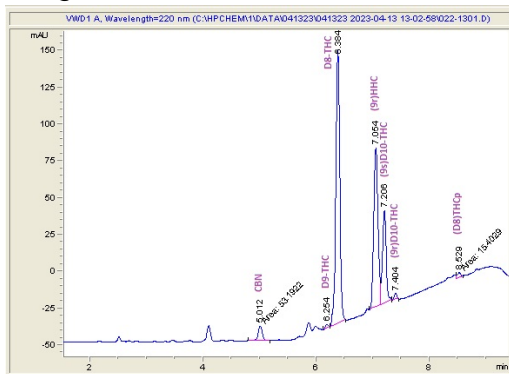
Blend 2ml Cart: Cherry Pie

Sample Submitted: 04-13-2023; Report Date: 04-16-2023

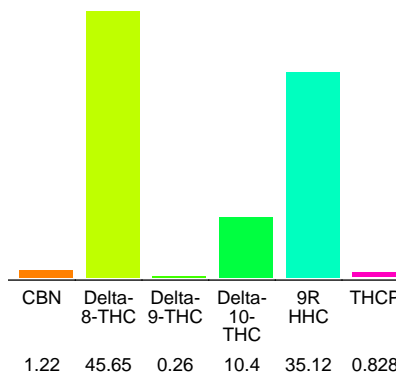
Blend 2ml Cart: Cherry Pie

Extract

Chromatogram



Cannabinoid Profile



Cannabinoid Profile by HPLC

0.26%

Delta-9-THC

0.00%

CBD

93.48%

Total Cannabinoids

Cannabinoid	% wt	mg/g
CBN	1.22	12.2
Delta-8-THC	45.65	456.5
Delta-9-THC	0.26	2.6
Delta-10-THC	10.4	104.0
9R HHC	35.12	351.2
THCP	0.828	8.28
Total Cannabinoids	93.48	934.8
Calculated Delta-9-THC Yield	0.26	2.60
Calculated CBD Yield	0.00	0.00

Calculated Maximum Delta-9-THC Yield = Delta-9-THC + 0.877 * THCA

Calculated Maximum CBD Yield = CBD + 0.877 * CBDA

Marin Analytics, LLC

250 Bel Marin Keys Blvd, Suite D4
Novato, CA 94949

415-936-6477 / sarabiancalana1@gmail.com

Sara Biancalana
Chief Scientist

This sample has been tested by Marin Analytics, LLC using valid testing methodologies and a quality system. Values reported relate only to the sample tested. Marin Analytics, LLC makes no claims as to the efficacy, safety or other risks associated with any detected or non-detected levels of any compounds reported herein. This Certificate shall not be reproduced except in full, without the written approval of Marin Analytics, LLC. Copyright 2022 Marin Analytics, LLC All Rights Reserved.