

R.A. Royal CBD, LLC

Sample 597-112322-022

Three in One HHC: Blue Raspberry

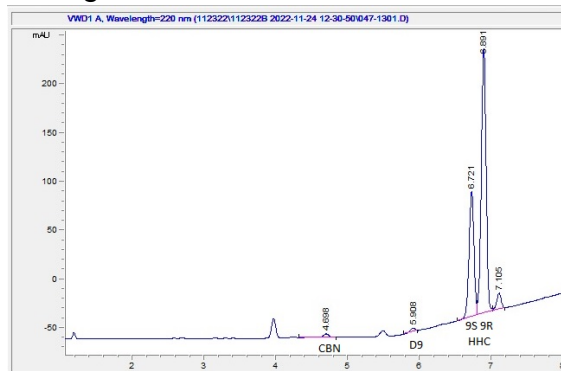
Sample Submitted: 11-23-2022; Report Date: 11-23-2022

Sample Unit Size: 3.00 g

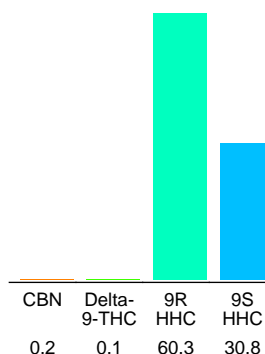
## Three in One HHC: Blue Raspberry

Distillate

## Chromatogram



## Cannabinoid Profile



## Cannabinoid Profile by HPLC

0.10%

Delta-9-THC

0.00%

CBD

91.40%

Total Cannabinoids

Cannabinoid	% wt	mg/unit
CBN	0.2	6.0
Delta-9-THC	0.1	3.0
9R HHC	60.3	1809.0
9S HHC	30.8	924.0
<b>Total Cannabinoids</b>	<b>91.40</b>	<b>2742.0</b>
<b>Calculated Delta-9-THC Yield</b>	<b>0.10</b>	<b>3.00</b>
<b>Calculated CBD Yield</b>	<b>0.00</b>	<b>0.00</b>

Calculated Maximum Delta-9-THC Yield = Delta-9-THC + 0.877 \* THCA

Calculated Maximum CBD Yield = CBD + 0.877 \* CBDA

## Marin Analytics, LLC

250 Bel Marin Keys Blvd, Suite D4  
Novato, CA 94949

415-936-6477 / sarabiancalana1@gmail.com

Sara Biancalana  
Chief Scientist

This sample has been tested by Marin Analytics, LLC using valid testing methodologies and a quality system. Values reported relate only to the sample tested. Marin Analytics, LLC makes no claims as to the efficacy, safety or other risks associated with any detected or non-detected levels of any compounds reported herein. This Certificate shall not be reproduced except in full, without the written approval of Marin Analytics, LLC. Copyright 2022 Marin Analytics, LLC All Rights Reserved.