



R.A. Royal CBD, LLC

Sample 597-102022-006

2ml Blackberry Kush

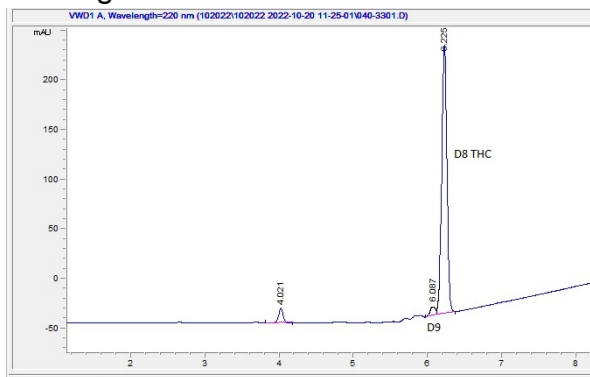
Sample Submitted: 10-20-2022; Report Date: 10-20-2022

Sample Unit Size: 2.00 g

## 2ml Blackberry Kush

Distillate

## Chromatogram



## Cannabinoid Profile



## Cannabinoid Profile by HPLC

0.21%

Calculated Delta-9-THC Yield

0.00%

Calculated CBD Yield

86.22%

Total Cannabinoids

Cannabinoid	% wt	mg/unit
Delta-8-THC	86.01	1720.2
Delta-9-THC	0.21	4.2
<b>Total Cannabinoids</b>	<b>86.22</b>	<b>1724.4</b>
<b>Calculated Delta-9-THC Yield</b>	<b>0.21</b>	<b>4.20</b>
<b>Calculated CBD Yield</b>	<b>0.00</b>	<b>0.00</b>

Calculated Maximum Delta-9-THC Yield = Delta-9-THC + 0.877 \* THCA

Calculated Maximum CBD Yield = CBD + 0.877 \* CBDA

## Marin Analytics, LLC

250 Bel Marin Keys Blvd, Suite D4  
Novato, CA 94949

415-936-6477 / sarabiancalana1@gmail.com

Sara Biancalana  
Chief Scientist

This sample has been tested by Marin Analytics, LLC using valid testing methodologies and a quality system. Values reported relate only to the sample tested. Marin Analytics, LLC makes no claims as to the efficacy, safety or other risks associated with any detected or non-detected levels of any compounds reported herein. This Certificate shall not be reproduced except in full, without the written approval of Marin Analytics, LLC.